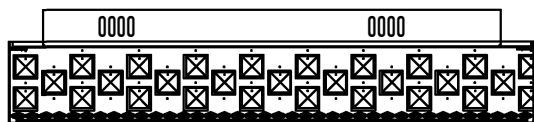


Trade Mark:
CRYSTAL WORLD INC

Product Name: Ceiling lamp
Model :5073C22C
120Vac, 60Hz,AC ONLY
Lamp size:Ø22"XH5"

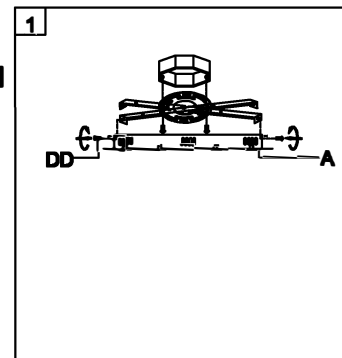


CEILING LAMP ASSEMBLY INSTRUCTIONS

1. Place fixture (A) onto Crossbar (EE), secure with Mounting screw (DD).
Note: The fixture (A) should be installed with the sockets facing down.

Hardware Used

DD Mounting screw  X 4

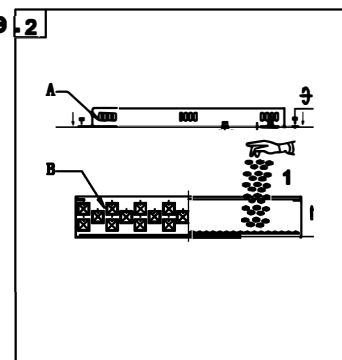


2. Please put the crystal (1) in the fixture and then fix (A) with (B).

1

 14mm*1PCS

1700PCS



3. Lighting bulbs (not included).

120V LED  12*3W
DIMMABLE (4000K)

