

Assembly Instruction Sheet #S-5063P26 For Style 5063P26

Tools Required: Flathead screwdriver, Pliers screwdriver, pliers, wire cutters, wire strippers, electrical tape, safety glasses.

Light Source: (3) (3) Candelabra Base Bulbs 40W Maximum (Not Included).

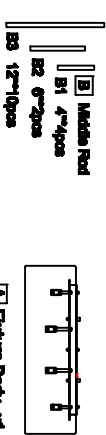
Estimated Assembly Time: 30-40 minutes

Preparation: Identify and label all parts before beginning installation. Check package contents list and diagrams later in the manual to be sure all parts are present. If any parts are missing or damaged, do not attempt to assemble, install, or operate the fixture. Contact customer service for replacement parts.

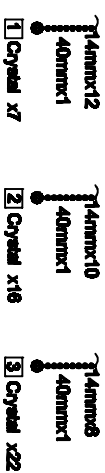
Warnings and Cautions

Turn off electricity at circuit breaker or main fuse box before installation. Connect a licensed electrician if in doubt. These instructions are provided for your safety. It is very important you read them completely before installing the fixture. We strongly recommend that a licensed, professional electrician perform the installation. Disconnect fixture from power source before replacing bulbs. Make sure bulbs are given sufficient time to cool before removal.

Package Contents

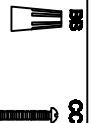


CE Ceiling Canopy x1



Hardware Contents

PART	DESCRIPTION	QUANTITY
BB	Wire nut	2pcs
CC	Outlet Box Screw	2pcs



STEP 1 - Release Creeper from Ceiling Canopy

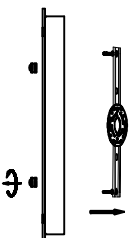


Figure 1

STEP 2 - Install Middle Rod, Ceiling Canopy to Fixture Body.

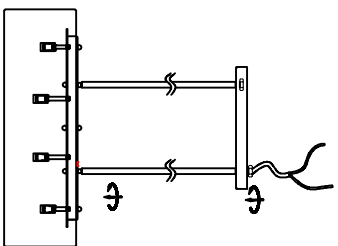


Figure 2

STEP 3 - Attach Mounting Bracket to Outlet Box

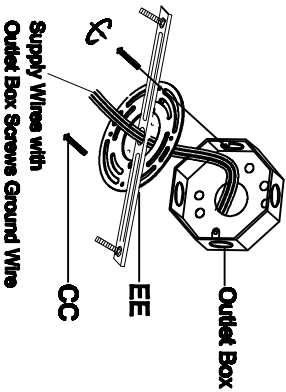


Figure 3

STEP 5 - Install Ceiling Canopy to Ceiling

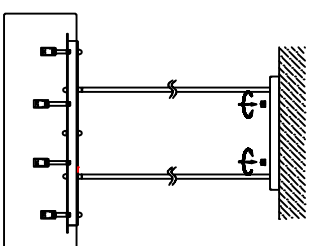


Figure 5

STEP 4 - Wire Connections

A. Use standard wire connectors to make all wire connections. Twist connectors until wires are tightly joined together. Wrap each connector with approved electrical tape and carefully stuff all the connected wires into the Outlet Box.

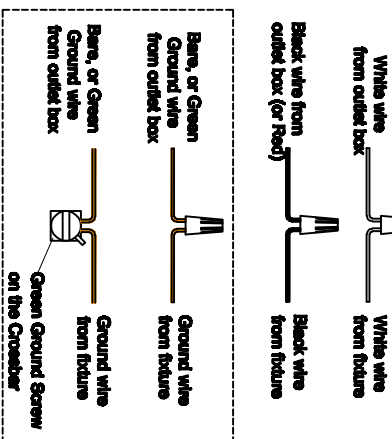


Figure 4

STEP 6 - Install Crystal and Bulbs.

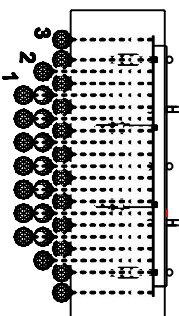


Figure 6

