

# Assembly Instruction Sheet #S-1273P23 For Style 1273P23

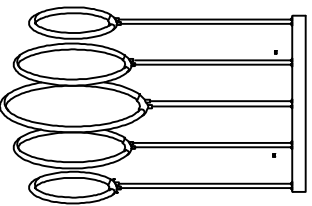
Tools Required: Flathead screwdriver, Phillips screwdriver, pliers, wire cutters, wire strippers, electrical tape, safety glasses.  
 Light Source: (8) 120V LED 37W DIMMABLE (8000K)  
 Estimated Assembly Time: 10-20 minutes  
 Preparation: Identify and inspect all parts before beginning installation. Check package content list and diagrams below to be sure all parts are present. If any parts are missing or damaged, do not attempt to assemble, install, or operate the fixture. Contact customer service for replacement parts.

### Warnings and Cautions

Turn off electricity at circuit breaker or main fuse box before installation. Consult a licensed electrician if in doubt. These instructions are provided for your safety. It is very important you read them completely before installing the fixture. We strongly recommend that a licensed, professional electrician perform the installation. Disconnect fixture from power source before replacing bulbs. Make sure bulbs are given sufficient time to cool before removal.

### Package Contents

STEP 1 - Release Crossbar from Ceiling Canopy.



A Fixture Body x1

### Hardware Contents

PART	DESCRIPTION	QUANTITY
BB	Wire nut	2pos
CC	Outlet Box Screw	2pos

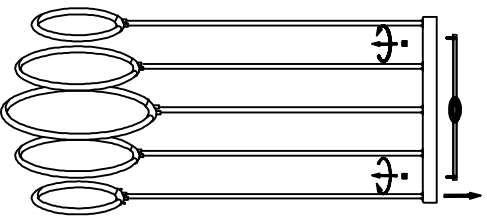
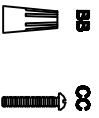
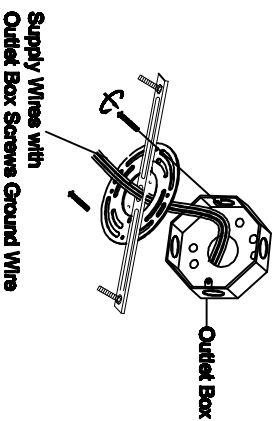


Figure 1

STEP 2 - Attach Crossbar to Outlet Box.



Supply Wires with Outlet Box Screws Ground Wire

Figure 2

STEP 4 - Install Ceiling Canopy to Ceiling

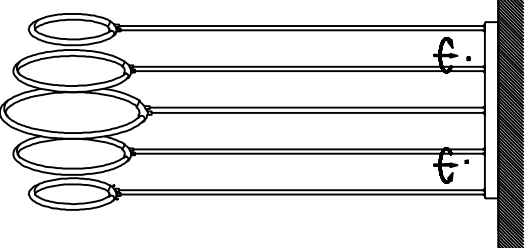


Figure 4

STEP 3 - Wire Connections

A. Use standard wire connectors (not included) to make all wire connections. Twist connectors and wires are tightly joined together. Wrap each connection with approved electrical tape and carefully stuff all the connected wires into the Outlet Box.

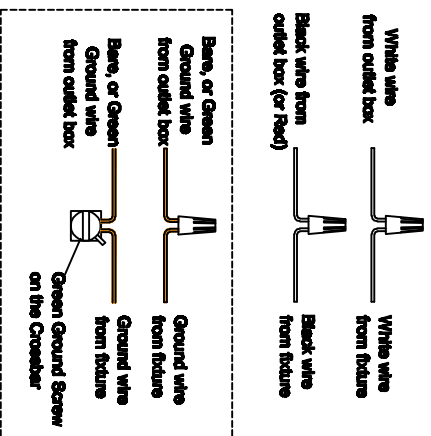


Figure 3