

STEP 4 – Fit Backplate to Mounting bracket Assembly.

A. Fit the backplate to Mounting Screws (DD) and secure with Decorative Caps (AA). Note: The backplate should be snug against the ceiling and the Decorative Caps (AA). If not, adjust the length of the Mounting Screws (DD) by unscrewing the Hex Nut and Lock Washer and then screwing Mounting Screws (DD) in or out of the Mounting bracket (EE) until the correct length is achieved. Once the backplate is secure, remove the Decorative Caps (AA) and backplate and proceed to Step 5.

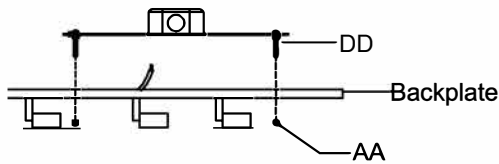


Figure 4

STEP 6 – Install Backplate to Ceiling.

A. Carefully tuck all wires into the outlet box and position the backplate of the Fixture Body (A) over the outlet box. Align the holes in the backplate with the Mounting Screws (DD). Secure with Decorative Caps (AA) and hand tighten until snug.

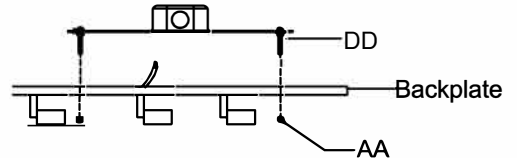


Figure 6

STEP 5 – Wire Connections.

A. Use standard wire connectors to make all wire connections. Twist connectors until wires are tightly joined together. Wrap each connection with approved electrical tape and carefully stuff all the connected wires into the Outlet Box.

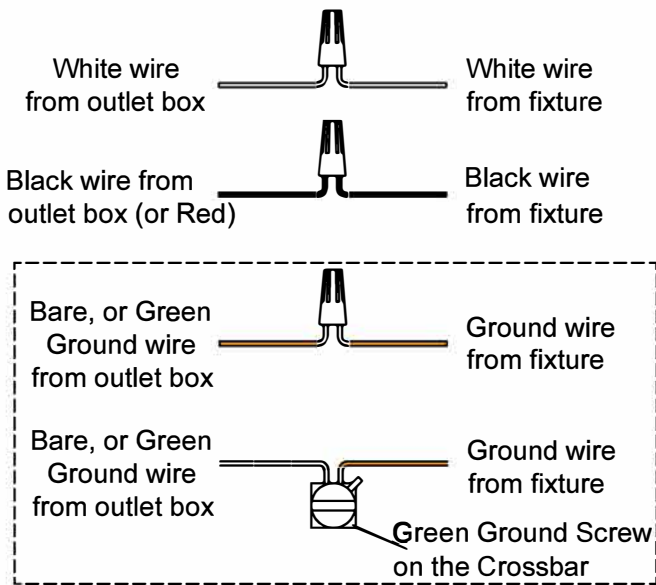


Figure 5

STEP 7 – Install bulb and cover.

A. Install bulbs into sockets and screw snug into place.
 B. Line up the holes on the cover and the holes on the Fixture Body (A) then fix them together with screws.

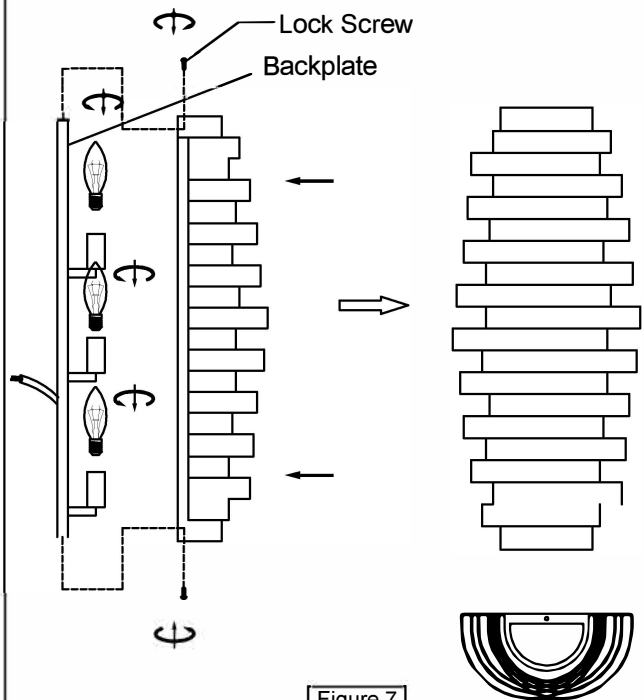


Figure 7